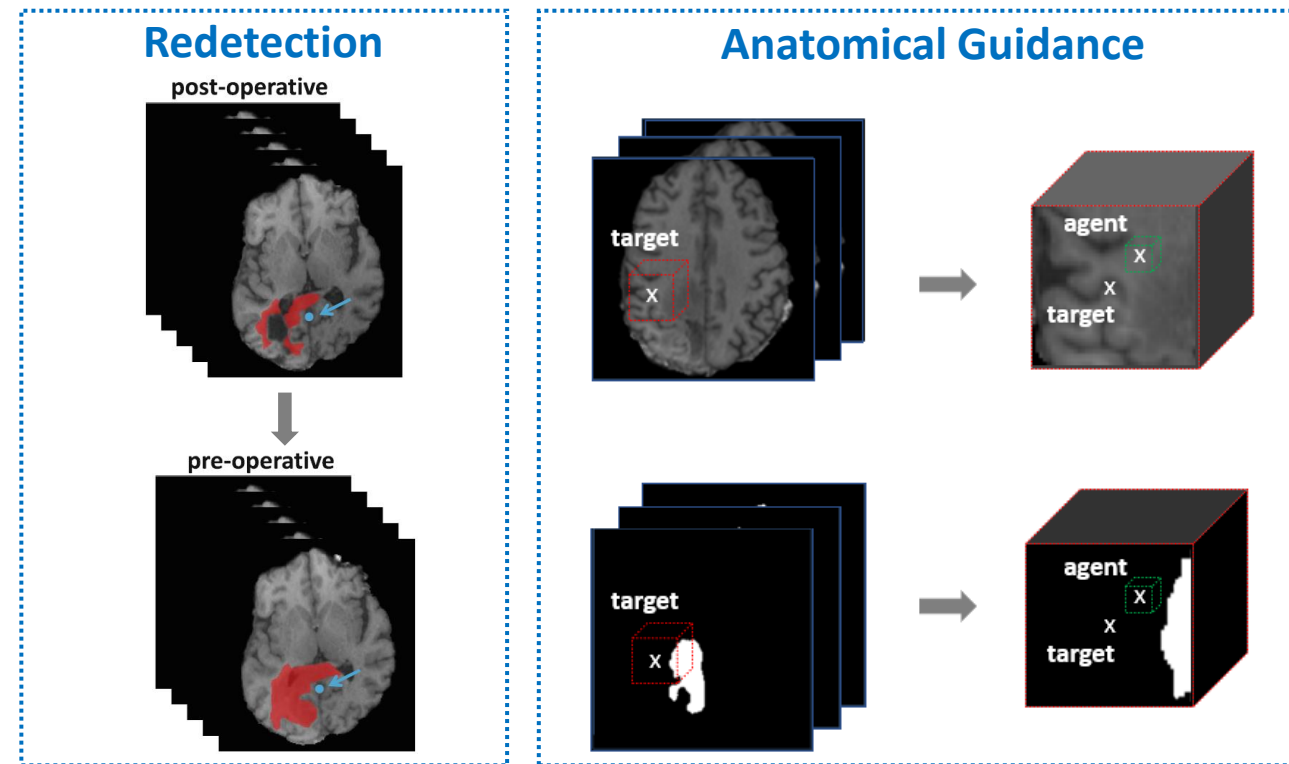


Reinforced Redetection of Landmark in pre- and post-operative Brain Scan using Anatomical Guidance for Image Alignment

Diana Waldmannstetter, Fernando Navarro, Benedikt Wiestler, Jan S. Kirschke, Anjany Sekuboyina, Ester Molero & Bjoern H. Menze

- Highlights
 - Reinforcement learning
 - Landmark redetection
 - Anatomical guidance
- Findings
 - High agreement with human expert performance
 - Patient-specific modeling
- Interesting observations
 - Deep learning model and human expert show similar behavior in difficult tissue structures
- Learning experience
 - Training is everything!



	Mean distance [mm]	Median distance [mm]
Baseline	3.05	1.41
Anatomical Guidance	2.82	1.53
Expert	2.18	2.0