

# Multimodal MRI Template Creation in the Ring-Tailed Lemur and Rhesus Macaque

Frederik Lange, R. Mars, S. Smith, M. Bertelsen, A. Khrapitchev, P. Manger, J. Andersson

## • Highlights

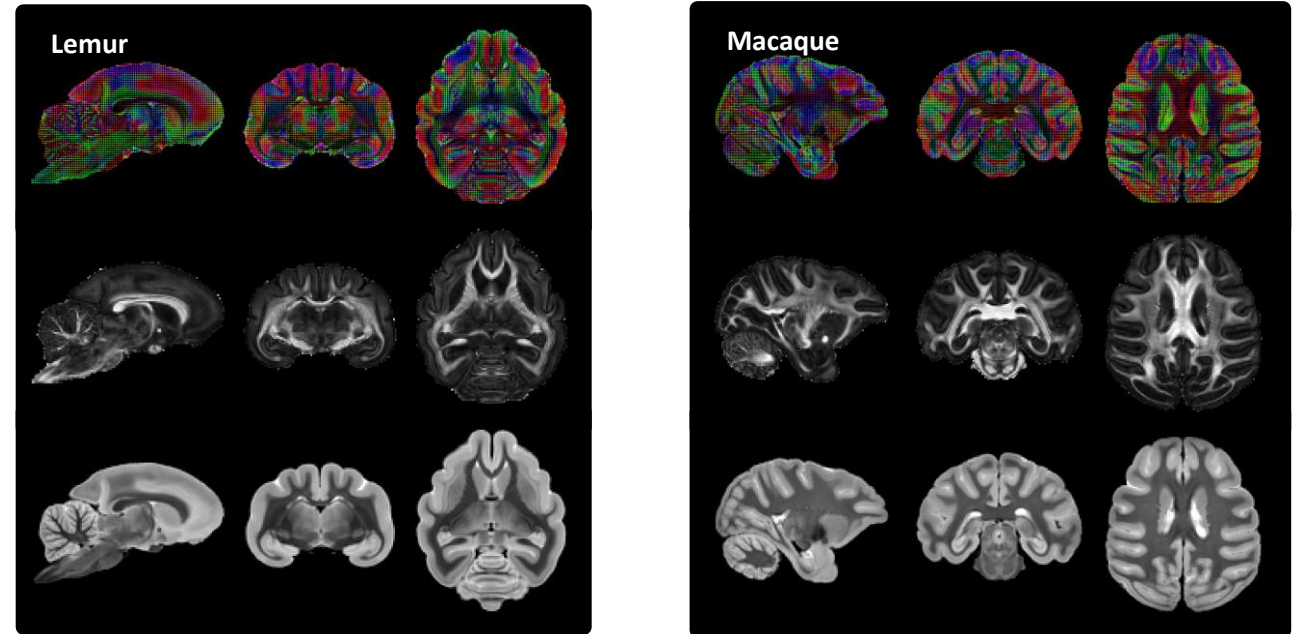
- Compared T2, DTI and Multimodal strategies for driving template creation
- Utilised novel MultiMOdal Registration Framework (MMORF)

## • Findings

- Multimodal driven template creation is both qualitatively and quantitatively superior to T2-only or DTI-only

## • Interesting observations

- T2 struggled in ventricles
- DTI struggled in sulci



**Table 2.** Average MI and OVL measures in the macaque

	MM Template	T2 Template	DTI Template
T2 Mutual Information	1.151	1.210	1.072
OVL Whole Brain	0.784	0.769	0.774
OVL FA Weighted	0.964	0.949	0.960
OVL FA Masked	0.891	0.870	0.880